

CRANE CREEK COUNTRY CLUB

"A PLANNED UNIT DEVELOPMENT"

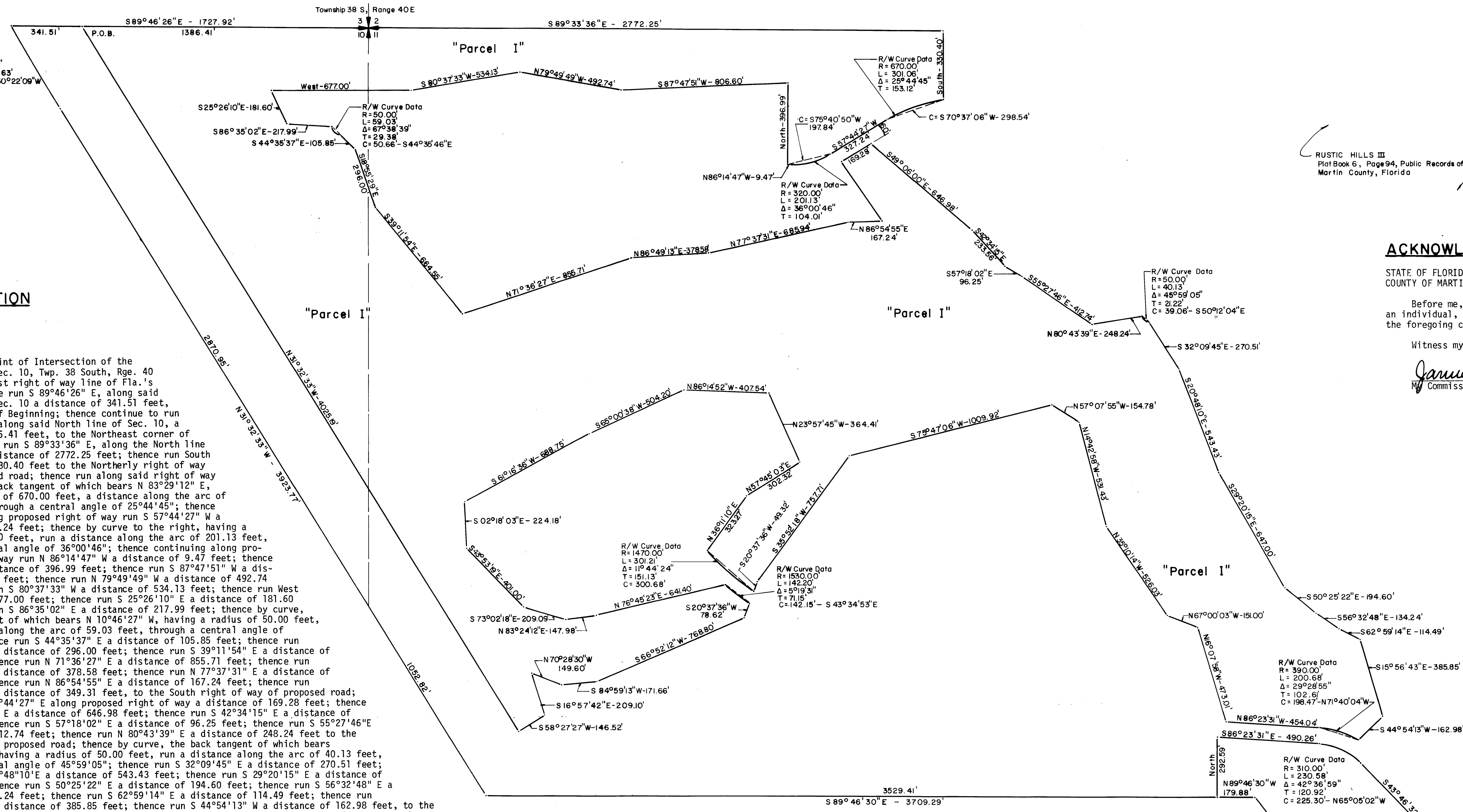
IN A PORTION OF SECTIONS 10, 11, AND 12, TWP. 38 S., RGE. 40 E., MARTIN COUNTY, FLORIDA

PHASE ONE

I, LOUISE V. ISAACS, Clerk of the Circuit Court of Martin County, Florida, hereby certify that this plat was filed for record in Plat Book 7, Page 22, Martin County, Florida, public records, this 18 day of July, 1977.

LOUISE V. ISAACS, CLERK
CIRCUIT COURT
MARTIN COUNTY, FLORIDA

File No. 278325
By: Arthur M. Young
Deputy Clerk



DESCRIPTION

PARCEL I

Start at the Point of Intersection of the North line of Sec. 10, Twp. 38 South, Rge. 40 East and the East right of way line of Fla.'s Turnpike; thence run S 89°46'26" E, along said North line of Sec. 10 a distance of 341.51 feet, for the Point of Beginning; thence continue to run S 89°46'26" E, along said North line of Sec. 10, a distance of 1386.41 feet, to the Northeast corner of Sec. 10; thence run S 89°33'36" E, along the North line of Sec. 11, a distance of 2772.25 feet; thence run South a distance of 330.40 feet to the Northerly right of way line of proposed road; thence run along said right of way by curve, the back tangent of which bears N 83°29'12" E, having a radius of 670.00 feet, a distance along the arc of 301.06 feet, through a central angle of 25°44'45"; thence continuing along proposed right of way run S 57°44'27" W a distance of 327.24 feet; thence by curve to the right, having a radius of 320.00 feet, run a distance along the arc of 201.13 feet, through a central angle of 36°00'46"; thence continuing along proposed right of way run N 86°14'47" W a distance of 9.47 feet; thence run North a distance of 396.99 feet; thence run S 87°47'51" W a distance of 806.60 feet; thence run N 79°49'49" W a distance of 492.74 feet; thence run S 80°37'33" W a distance of 534.13 feet; thence run West a distance of 677.00 feet; thence run S 25°26'10" E a distance of 181.60 feet; thence run S 86°35'02" E a distance of 217.99 feet; thence by curve, the back tangent of which bears N 10°46'27" W, having a radius of 50.00 feet, run a distance along the arc of 59.03 feet, through a central angle of 67°38'39"; thence run S 44°35'37" E a distance of 105.85 feet; thence run S 18°55'29" E a distance of 296.00 feet; thence run S 39°11'54" E a distance of 664.55 feet; thence run N 71°36'27" E a distance of 855.71 feet; thence run N 86°49'13" E a distance of 378.58 feet; thence run N 77°37'31" E a distance of 685.94 feet; thence run N 86°54'55" E a distance of 167.24 feet; thence run N 34°57'54" W a distance of 349.31 feet, to the South right of way of proposed road; thence run N 57°44'27" E along proposed right of way a distance of 169.28 feet; thence run S 49°06'00" E a distance of 646.98 feet; thence run S 42°34'15" E a distance of 233.56 feet; thence run S 57°18'02" E a distance of 96.25 feet; thence run S 55°27'46" E a distance of 412.74 feet; thence run N 80°43'39" E a distance of 248.24 feet to the right of way of proposed road; thence by curve, the back tangent of which bears N 27°12'31" W, having a radius of 50.00 feet, run a distance along the arc of 40.13 feet, through a central angle of 45°59'05"; thence run S 32°09'45" E a distance of 270.51 feet; thence run S 20°48'10" E a distance of 543.43 feet; thence run S 29°20'15" E a distance of 647.00 feet; thence run S 50°25'22" E a distance of 194.60 feet; thence run S 56°32'48" E a distance of 134.24 feet; thence run S 62°59'14" E a distance of 114.49 feet; thence run S 15°56'43" E a distance of 385.85 feet; thence run S 44°54'13" W a distance of 162.98 feet, to the right of way of proposed road; thence run along right of way of said proposed road by curve, the back tangent of which bears S 56°55'36" E, having a radius of 390.00 feet, a distance along the arc of 200.68 feet, through a central angle of 29°28'55"; thence continuing along said proposed right of way run N 86°23'31" W a distance of 454.04 feet; thence run N 16°07'58" W a distance of 473.01 feet; thence run N 67°00'03" W a distance of 151.00 feet; thence run N 35°10'14" W a distance of 526.03 feet; thence run N 14°42'58" W a distance of 531.43 feet; thence run N 57°07'55" W a distance of 154.78 feet; thence run S 75°47'06" W a distance of 1009.92 feet; thence run S 35°52'18" W a distance of 757.71 feet; thence run S 20°37'36" W a distance of 49.32 feet to the right of way of proposed road; thence run along said right of way of proposed road by curve, the back tangent of which bears S 53°35'52" E, having a radius of 1470.00 feet, a distance of 301.21 feet, through a central angle of 11°44'24"; thence run N 36°11'10" E a distance of 323.27 feet; thence run N 57°45'03" E a distance of 302.32 feet; thence run N 23°57'45" W a distance of 364.41 feet; thence run N 86°14'52" W a distance of 407.54 feet; thence run S 65°00'38" W a distance of 504.20 feet; thence run S 61°16'36" W a distance of 688.75 feet; thence run S 2°18'03" E a distance of 224.18 feet; thence run S 43°53'19" E a distance of 401.00 feet; thence run S 73°02'18" E a distance of 209.09 feet; thence run N 83°24'12" E a distance of 147.98 feet; thence run N 76°45'23" E a distance of 641.40 feet, to the right of way of proposed road; thence run along said right of way of proposed road by curve, the back tangent of which bears N 48°54'23" W, having a radius of 1530.00 feet, a distance along the arc of 142.20 feet, through a central angle of 5°19'31"; thence run S 20°37'36" W a distance of 78.62 feet; thence run S 66°52'12" W a distance of 768.80 feet; thence run S 84°59'13" W a distance of 171.66 feet; thence run N70°28'30" W a distance of 149.60 feet; thence run S 16°57'42" E a distance of 209.10 feet; thence run S 58°27'27" W a distance of 146.52 feet; thence run N 31°32'33" W a distance of 4025.19 feet to the Point of Beginning, containing 174.295 acres.

Parcel II

Start at the Southeast corner of Sec. 11, Twp. 38 South, Rge. 40 East; thence run N 0°14'48" W a distance of 660.90 feet; thence run N 89°46'26" W a distance of 416.18 feet; thence run N 37°30'00" W a distance of 252.40 feet for the Point of Beginning; thence continue to run N 37°30'00" W a distance of 900 feet; thence run N 89°46'30" W a distance of 179.88 feet; thence North a distance of 292.59 feet, to the Southerly right of way of proposed road; thence run S 86°23'31" E along said proposed right of way a distance of 490.26 feet; thence by curve to the right, having a radius of 310.00 feet, run a distance along the arc of 230.58 feet, through a central angle of 42°36'59"; thence run S 43°46'32" E a distance of 724.51 feet; thence run S 52°30'00" W a distance of 588.76 feet, to the Point of Beginning. Containing 13.345 acres.

ACKNOWLEDGEMENT

STATE OF FLORIDA
COUNTY OF MARTIN

Before me, the undersigned Notary Public, personally appeared Arthur M. Young, an individual, to me well known, and he acknowledged before me that he executed the foregoing certificate of ownership and dedication.

Witness my hand and official seal this 25 day of January, 1977.

January 4, 1980
Notary Public
State of Florida at Large

Mary R. Byrd
Notary Public
State of Florida at Large

TITLE CERTIFICATION

I, George W. Sommer, a member of the Fla. bar, hereby certify that: Apparent record title to the land described and shown on this is in the name of the person, executing the dedication hereon and that no mortgages encumber the land described hereon.

Dated this 25 day of JANUARY 1977.

George W. Sommer
George W. Sommer, Attorney
Post Office Box 2210
Stuart, Florida 33494

SURVEYORS CERTIFICATION

I, Lee Brock, do hereby certify that this plat of Crane Creek Country Club, Phase I, "A Planned Unit Development" is a true and correct representation of the lands surveyed, that the survey was made under my supervision and that the survey data complies with all of the requirements of Chapter 177, Fla. Statutes.

Lee Brock
Lee Brock
Fla. Surveyors Regis. No. 2157

Paul Foreman July 9, 1977
Notary Public
State of Fla. at Large

CERTIFICATE OF OWNERSHIP AND DEDICATION

STATE OF FLORIDA
COUNTY OF MARTIN

Arthur M. Young, an individual, does hereby certify that he is the owner of the property described hereon and does hereby dedicate as follows:

UTILITY EASEMENTS shown on this plat of Crane Creek Country Club, Phase I, A Planned Unit Development, may be used for utility purposes by any utility in compliance with such ordinances and regulations as may be adopted from time to time by the Board of County Commissioners of Martin County.

Signed & Sealed this 17th day of JANUARY 1977.

Arthur M. Young Deanne S. Jackson
Arthur M. Young, as individual witness

APPROVAL

This plat is hereby approved by the undersigned on the date or dates indicated.

Samuel E. Weir July 14, 1977
County Engineer (date)

John E. Camacho July 12, 1977
County Attorney (date)

John S. Blum July 12, 1977
Chairman, Planning & Zoning Board (date)

Arthur M. Young July 9, 1977
Chairman, Board of Co. Commissioners (date)

Attest: Louise V. Isaacs July 18, 1977
Clerk (date)
By: Arthur M. Young, Deputy Clerk